

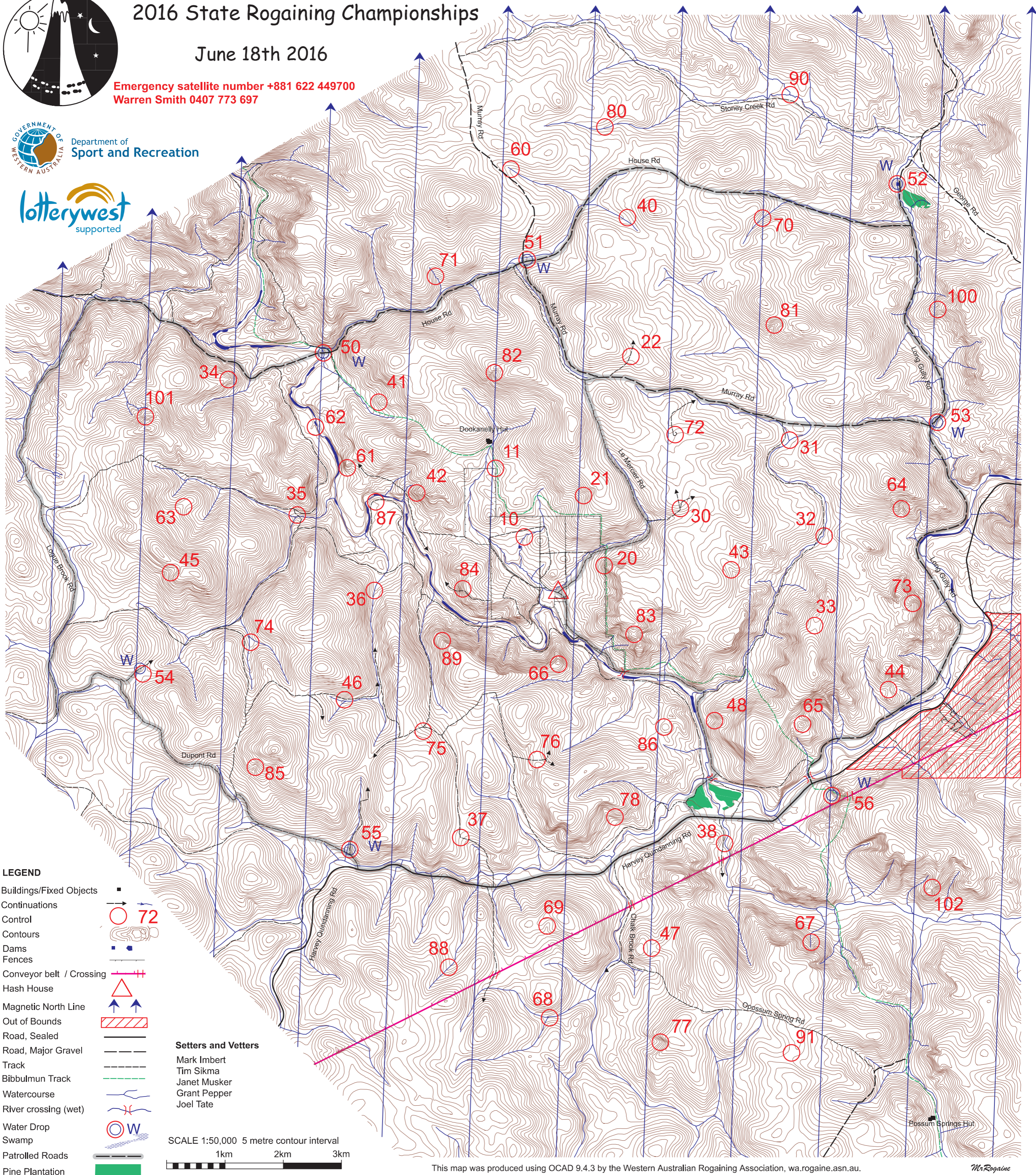
Bibbulmun and Bubbles



2016 State Rogaining Championships

June 18th 2016

Emergency satellite number +881 622 449700
Warren Smith 0407 773 697



LEGEND

- Buildings/Fixed Objects
- Continuations
- Control 72
- Contours
- Dams
- Fences
- Conveyor belt / Crossing
- Hash House
- Magnetic North Line
- Out of Bounds
- Road, Sealed
- Road, Major Gravel
- Track
- Bibbulmun Track
- Watercourse
- River crossing (wet)
- Water Drop W
- Swamp
- Patrolled Roads
- Pine Plantation

Setters and Vettors
 Mark Imbert
 Tim Sikma
 Janet Musker
 Grant Pepper
 Joel Tate

SCALE 1:50,000 5 metre contour interval
 1km 2km 3km

This map was produced using OCAD 9.4.3 by the Western Australian Rogaining Association, wa.rogaine.asn.au.
 Data supplied by DOLA and used under copy licence 393/93. Possession of this map does not give right of entry to this area.

Bibbulmun and Bubbles 24 Hr Rogaine June 18th/19th - 2016

No.	Description	Points	No.	Description	Points	Important Information
10	The watercourse	10	60	The watercourse, upper part → 80, bear 60° → follow watercourse	60	Safety Cards From 11.30am Saturday Briefing 11.45am Saturday Start 12 noon Saturday Finish 12 noon Sunday Hash House Opens at 5pm Sat. Closes by 1pm Sunday Sunset 5.19 pm Moonshine 3.54pm Moonset 5.48am Sunrise 7.16am Late Penalty 10 points per minute or part minute. LATE (no points) later than 10.30 pm Controls Used 64 Total Points 3570
11	Corner of plantation	10	61	The spur	60	
20	The spur → HH, 2330	20	62	'a' river access track	60	
21	The gully	20	63	The spur → 101, 338°, 340	60	
22	The track, high point of	20	64	The gully	60	
30	The track junction → 20, 238°, follow road → BT	30	65	The knoll → 56 → 171°, 1.5 km	60	
31	The watercourse junction	30	66	The knoll	60	
32	The watercourse bend	30	67	The gully → 91, 187°, 2.3 km	60	
33	The broad saddle	30	68	The watercourse junction → 88, 311°, 281°	60	
34	The spur → 50, 59°	30	69	The gully → 78, 26°, 25° → 5m	60	
35	The track/watercourse junction	30	70	The watercourse → 84, 173°	70	
36	The watercourse	30	71	The watercourse → 51, 75°	70	
37	The track bend	30	72	Middle of old track turn around → 39, 175°	70	
38	The watercourse bend	30	73	'a' rocky ridge, end of	70	
40	'a' gravel pit, north edge → 70, 88°, follow w/c down	40	74	'a' watercourse junction. 20mtrs @ 150 degrees → 54, 250°	70	
41	The broad spur	40	75	'a' track bend → 46, 292°, 291°	70	
42	The spur	40	76	The track high point. 50mtrs @ 350 degrees → 75, 284°	70	
43	The gully	40	77	The gully → 68, 285°	70	
44	The saddle	40	78	'a' rocky outcrop, north edge. Caution - cliff! → 26, 23°	70	
45	The gully → 63, 8°	40	80	The watercourse → 40, 166°, 167°	80	
46	On the track → 85, 229°, 232°	40	81	The gully → 72, 216°, 219°	80	
47	The saddle	40	82	The gully	80	
48	The gully → 65, 91°, 1.5 km	40	83	The saddle → 48°, 140°, 135°, 2.2 km	80	
50	The causeway (water drop) → 71, 50°	40	84	The rocky clearing, east edge. Caution - cliff!	80	
51	'a' track junction. 55mtrs @ 140degrees (water - at junction) → 60	50	85	The gully → 74, w/c track, follow gully 356°	80	
52	The dam, west side (water)	50	86	The knoll → 76, 253°, 254°	80	
53	'a' track and watercourse junction (water drop)	50	87	'a' track junction	80	
54	The saddle (water drop on track) → 45, 14°	50	88	The watercourse → 67, 61°, 58°	80	
55	'a' track junction (water drop)	50	89	The spur	80	
56	'a' knoll (water drop in gravel pit 100mtrs NW) → 102, follow (134) → follow spur down	50	90	The watercourse junction	90	
	From 0055m - 139°, 2.4 km, 136 (134) → follow spur down	50	91	The saddle, on 'a' track → 77, 274°	90	
HH → 83	119°, 1.5 km	115	100	'a' small knoll, on the spur	100	
			101	'a' small gully in the rocky clearings → 34, 62°, 64°	100	
			102	The saddle → 67, 242°, 2.4 km, 245°	100	

Water Drops: At controls 50,51,52,53,54,55, 56
 If you are injured please make your way to a water drop or a patrolled road and wait there for help.